



TAS stairs system is a multipurpose construction which can be easily arranged according to the needs:

- As temporary stairs to overcome small and significant level differences of various pitches (excavations banks, building tiers)
- As temporary gangways (excavations at road and construction works, trenches)
- As staircases to overcome significant level differences (buildings, deep foundation excavations e.g. underground parking lots)
- As a step-over platform to overcome small obstacles like walls or pipelines
- As scaffolding stairs - TAS stairs equipped with special chucks make it possible to assemble the stairs on scaffold systems.



QUICK ASSEMBLY



THE STAIRS ARE EQUIPPED WITH ANTI-SLIP STRIPS AND ARE AVAILABLE IN TWO WIDTHS 700 AND 1.000MM

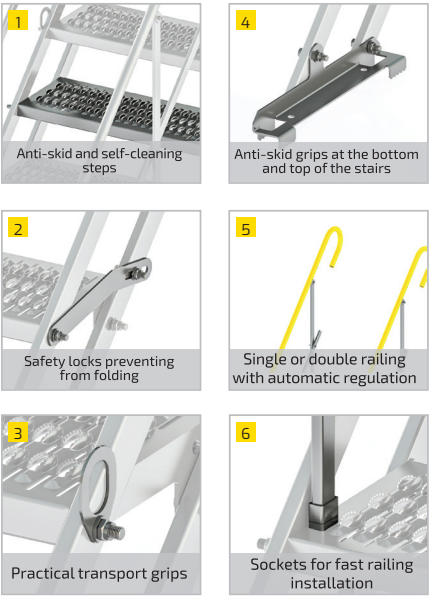
EN 12811 WE MEET ALL THE REQUIRED STANDARDS



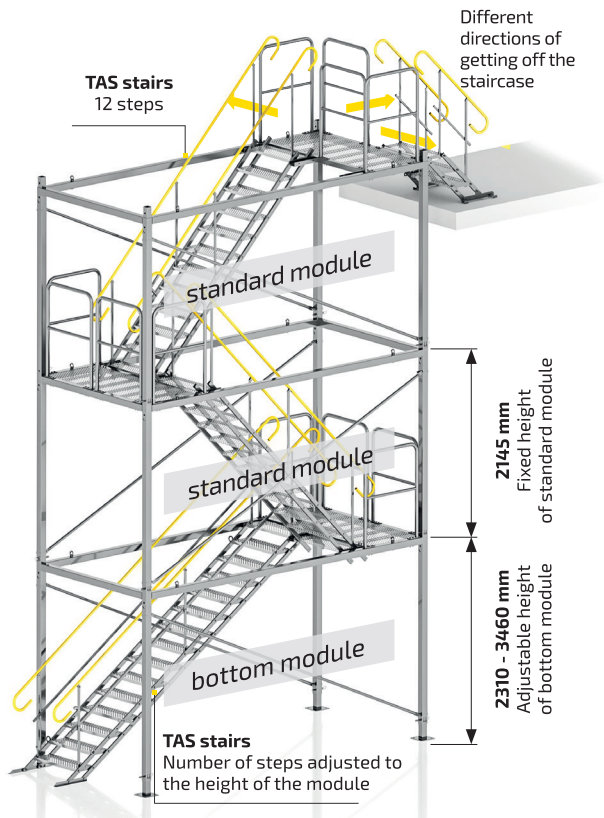
6 AVAILABLE MODULES FROM 3 TO 18 STEPS



* -Manufacturer certified according to EN 1090-1 issued by TUV SUD (Z527 notified body)



The temporary stairs system consists of 6 basic modules – 3, 6, 9, 12, 15 and 18 steps with possible angle regulation from 0 to 50 (modules from 3 to 12 steps), and 25 to 50 (15 and 18 steps modules). The stair are to be mounted on a previously prepared horizontal surface by attaching the lower and upper part with anchors and bars. TAS system can also be used as temporary step-over platform. The table below presents basic parameters of available modules.



TAS Staircases have modular construction which allows for a great number of available heights and directories of getting off the staircase. The system consists of two modules: **BOTTOM** and **STANDARD**, as well as TAS temporary stairs.

The standard module always includes 12-step stairs, and the bottom one's number of steps depends on the module's height.

Max. height /
difference of levels
(max. 4 modules)



Easy assembly
thanks to modular
construction

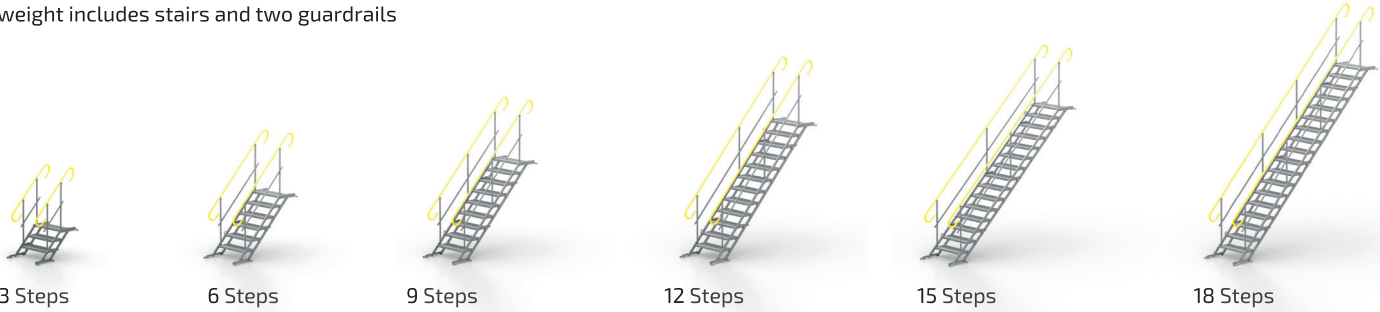


Easy adjustment of
height thanks to
a sliding foot



Number of steps	3		6		9		12		15		18	
Width [m]	700	1000	700	1000	700	1000	700	1000	700	1000	700	1000
Flight lenght [m]	0,8		1,61		2,42		3,23		4,05		4,86	
Height [m]	0 - 0,6		0 - 1,2		0 - 1,8		0 - 2,4		1,6 - 3,0		2,1 - 3,6	
Weight [kg]	47	56	74	93	105	134	133	171	162	208	192	248
Possibility to use as a gangway	yes		yes		yes		yes		yes (when used with a truss)			

* weight includes stairs and two guardrails



The information in this advertising material is for reference only. The product specification should be subject to verification with technical data provided by the manufacturer.